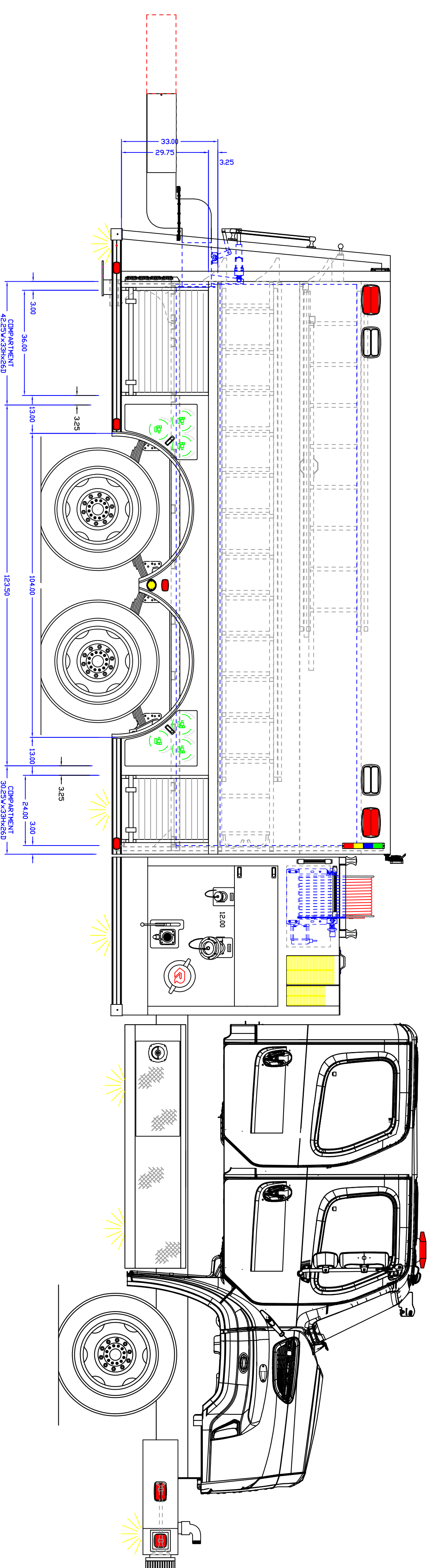
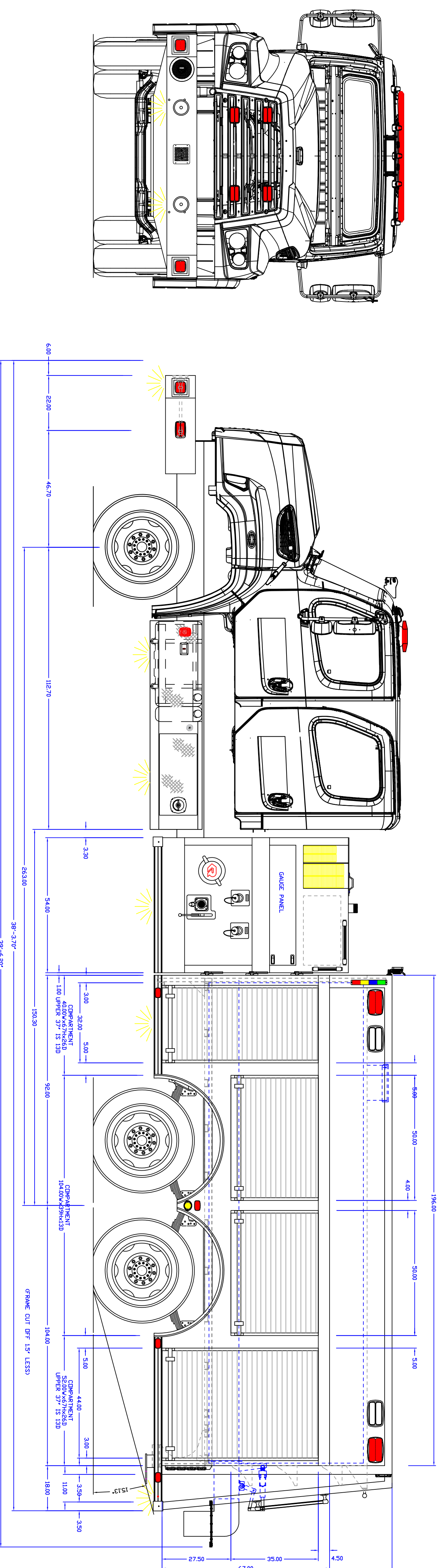
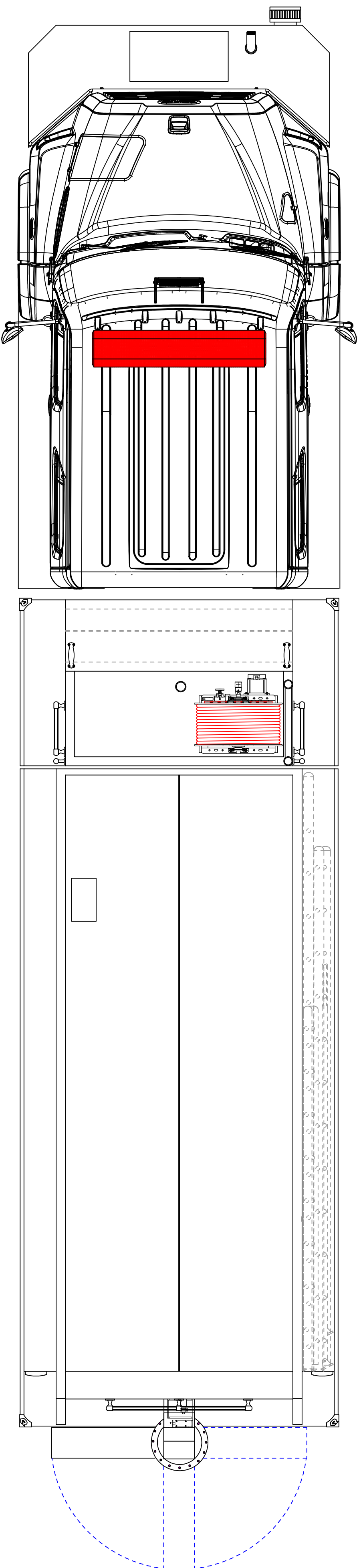


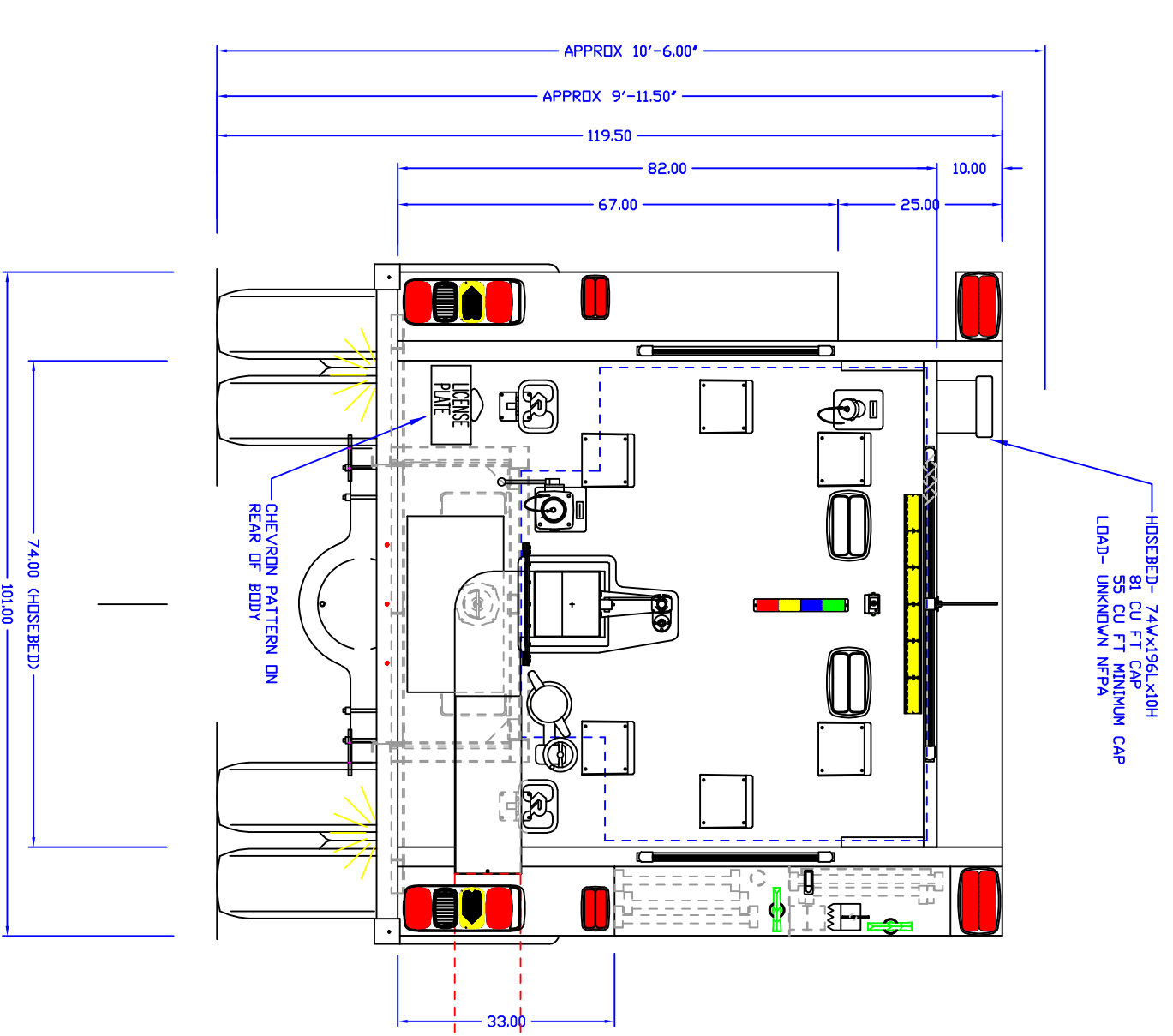
INITIALS: HF
 JOB NUMBER: 22016
 DATE: 9/9/2020

MAIN FILE: —
 DEPT: —
 DEALER: —

PRODUCTION APPROVED



- NOTES:
1. OVERALL HEIGHT IS IN LOADED CONDITION. UNLOADED HEIGHTS MAY BE 4" ABOVE HEIGHTS SHOWN.
 2. DO NOT SCALE DRAWING.
 3. ALL DIMENSIONS ARE APPROXIMATE AND SUBJECT TO ENGINEERING CHANGES.
 4. DRAWING MAY OR MAY NOT SHOW ALL ITEMS AS DESCRIBED IN THE WRITTEN DETAIL SPECIFICATIONS.
 5. INCLUSION OF AN ITEM ON THE DRAWING DOES NOT CONSTITUTE FINAL DELIVERED UNIT.
 6. THE EFFECTIVE DOOR OPENINGS WILL BE APPROX. 2" LESS THAN THE NOTED COMPARTMENT OPENING FOR ROLL UP DOORS AND UP TO APPROX. 4" LESS FOR HINGED DOORS.



APPROVED BY: _____

CHASSIS: FREIGHTLINER
 PUMP: HALE 1250 GPM
 TANK: POLY/3000
 PANEL MATL: LINE X
 COMP INTERIOR: SPATTER PAINTED

REVISION	DATE
DRAWN: WLM	DATE: 12-05-19

PROPRIETARY AND CONFIDENTIAL
 THE INFORMATION CONTAINED HEREIN IS THE SOLE PROPERTY OF ROSENBAUER. ANY REPRODUCTION IN PART OR AS A WHOLE WITHOUT THE WRITTEN PERMISSION OF ROSENBAUER IS PROHIBITED.

PURCHASING DEPT.
LOWNDES COUNTY, GA

ROSENBAUER FX 3/16"
 LOWNDES county, ga

